



REPORT TO CALGARY POLICE COMMISSION



CPS Monthly Chief's Reports: Bureau of Community Policing

ISC: ☒ Unclassified ☐ Protected A ☐ Protected B

Date 2025 05 13

Submitted for

☒ Information only ☐ Discussion ☐ Decision / Approval

Type of Meeting

- | | |
|---|--|
| <input type="checkbox"/> Executive Committee | <input checked="" type="checkbox"/> Commission Regular Meeting |
| <input type="checkbox"/> Finance, Audit, & Infrastructure Committee | <input checked="" type="checkbox"/> Public Session |
| <input type="checkbox"/> Police Personnel & Culture Committee | <input type="checkbox"/> In-camera with CPS |
| <input type="checkbox"/> Policing Services Committee | |
| <input type="checkbox"/> Workplace Review Steering Committee | |

Reason for Report

- ☐ Obligation under the *Police Act* or *Police Service Regulation*
☐ Obligation under Commission Policy
☒ Report on program and/or update on progress
☐ Response to Motion or Commission Inquiry
☐ Other:

Recommendations

1. That this report be received by the CPC for information on crime trends, traffic, and proactive activities to address social disorder and criminality across the City of Calgary.

Background / Analysis / Considerations / Next Steps









The new format (2025) for the Bureau of Community Policing will include highlights of CPS proactively addressing social disorder and crime throughout the city. Attachments detail April 2025 data pulled from the public facing dashboard, as well as detailed information supplied from the Traffic Section, CERT analyst and district analysts.

CERT March-April 2025

CERT continued to follow the mandate to create safe public spaces by engaging with community and taking action to reduce crime and social disorder through focused, collaborative enforcement and compassionate supports.

As the pilot wraps up, work continues with our partner agencies to address crime and social disorder in areas of community concern over the long term. Insights from the pilot and further updates will be shared at the June commission meeting.

By the Numbers – Feb. 17 to May 4, 2025

CALLS ATTENDED	REPORTS	INFO POSTS	BUSINESS CONTACTS	SOCIAL AGENCY REFERRALS	ARREST WARRANTS	SUMMONS	CHARGES LAID
							
Total	Total	Total	Total	Total	Total	Total	Total
4751	338	302	2526	3094	2946	2496	470

NAVIGATION CENTRE REFERRALS

There were 690 referrals to the Navigation Centre by the CERTs and 519 referrals by patrol for a total of 1670 between October 1, 2024, and May 12, 2025.

District Investigative Updates

Prolific Offender Disruption: In April, District Operations Team (DOT) members were investigating activity in relation to a problem address in the community of Southland when they observed two known very prolific POET offenders in the community near the Southland Leisure Center. Both offenders are known to be active in commercial break and enters. One of the POET offenders was known to have conditions and observed to be in violation of their release orders. As a result, he was transported to APS on two breaches. Intelligence was provided to the offender management unit capturing clothing and vehicle descriptions should it match any video footage of recent commercial break and enters.

Retail Theft Disruption: In mid-April, DOT members were investigating a group of offenders who had actively been engaged in retail thefts across the city and in RCMP jurisdiction. While in a covert capacity, they observed one of the offenders push two shopping carts of merchandise out of a Canadian Tire retail store and hide merchandise in a wooded area. During surveillance, they witnessed the same offender confront and threaten a store clerk who had followed the thief out of the store. The offender then fled in a waiting vehicle. RCMP were contacted and with the assistance of DOT, located the suspect vehicle taking two offenders into custody. Both were charged with theft over and threats by the attending RCMP members. This theft was identified to be part of a larger retail theft series occurring across the city and into rural bedroom communities and follow-up continues.

Fentanyl and Gun Seizure: In April, District 5 patrol members were proactively patrolling a hotspot location in the community of Sunridge when they observed an out of province vehicle parked in an unusually secluded location of a parking lot. Officers observed a male rummaging through the trunk and noted several gym bags and that the license plate did not match the vehicle description. Officers initiated a traffic stop once the vehicle was mobile and once the vehicle stopped, plastic bags containing an orange/pink substance were observed near the driver's feet. The driver was placed under arrest and while being placed in handcuffs; the passenger fled from the vehicle. With the assistance of back up patrol and K9 the second offender was taken into custody a short time later. Both offenders were identified to be from out of province. A Sig Sauer P226 Elite handgun with a laser sight, loaded with ten rounds of live ammunition was located under the driver's seat, along with a holster. The search of the vehicle further revealed knives, a drug scale, small dime bags, and ID cards belonging to other individuals. With the assistance of 4 GIU and DOT a related address was identified.



The following drugs were also seized: 47.2 g Fentanyl (Estimated street value \$2360), 16.9 g Methamphetamine (Estimated street value \$338), 31.5 g powder cocaine (Estimated street value \$3150), along with a 2006 Nissan Altima and \$7080 dollars in cash.

The driver was charged with 11 counts that included CDSA 5(2) x 3 charges, 3 counts of firearms related charges included possession of a weapon, careless storage of firearm, 4 counts of ammunition related charges and possession of identity documents. He had just completed a 3-year sentence for firearm related offences in Saskatchewan and advised the officer he could have shot him in the head.

Cocaine and Gun Seizure: In late April, during routine patrols, District 3 officers located a truck and a running but unoccupied BMW in an alley in North Haven. Two individuals in the truck appeared to be passed out. Upon waking them and initiating a search, officers found a plastic bag with white powder, a naloxone kit, eight cell phones, two scales, and various drug paraphernalia. The female occupant claimed ownership of the BMW. A search of the BMW revealed 40 unmarked pills, two sealed bags of cocaine, and a loaded shotgun. Officers seized approximately 2600 g of cocaine worth \$121,000 and 70 g of oxycodone worth \$3500. Both individuals were taken into custody.

New Construction Break and Enters Spiking:

In March, District 8 community resource officers (CROs) established the *Nail It Down* campaign to address the trend of break-and-enter and theft incidents at new home construction sites. The campaign was developed so that it is applicable to various types of construction sites.

The *Nail It Down* campaign features 10 crime prevention tips for construction sites, with an emphasis on security measures, the importance of keeping detailed property records and

reporting of incidents. Many of these incidents go unreported as they are often discovered after the fact and must be called in to non-emergency, which can be cumbersome. To address this, District 8 CROs are exploring an online reporting mechanism for commercial break-and-enters to create efficiencies and encourage more reporting, so the Service can more effectively address the issue and increase the chances of recovering stolen property.

Throughout the spring and summer, the District 8 CRO team will conduct outreach for the campaign through mobile Coffee with a Cop events at high-incidence construction sites.

The campaign's creative materials include [a handout with 10 crime prevention tips for construction sites](#), as well as social media content (graphics and video). The handout has been added to the crime prevention toolkit, and copies have been printed for use by officers in the community across the Service.

Traffic Updates

Alberta Sheriffs Branch (STEP)

During the period of January 1st, 2025-May 10th, 2025, the Stoney Trail Enforcement Project (STEP) had Sheriffs concentrate enforcement efforts alongside CPS regular education and enforcement. Cumulatively there have been :

- 42 Distracted Driving
- 10 Roadside Sanctions/DUI
- 322 Speeding
- 25 Part 2 Speeding
- 131 Other (mechanical issues etc.)

This resulted in a total \$180,127 fine revenue for the province.

Attachments (if any)

- Corporate Data & Analytics April 2025 Crime Overview
- CPS Community Counter and Safety Hub update (Motion to return to Full CPC within the May 2025 BOCPP Crime Report)
- March- April 2025 Traffic Safety Report

Approval signatures

AUTHOR signature:

Tamara Daku

2025 05 13

Tamara Daku, Manager

Date

Bureau of Community Policing Analytics

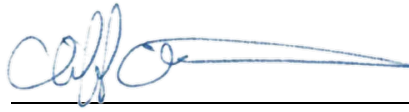
REVIEWED BY signature:

2025

Date

Bureau of Community Policing

EXECUTIVE SPONSOR signature:



2025 05 16

Cliff O'Brien, Deputy Chief Bureau of
Community Policing

Date

CHIEF OF POLICE signature:

Date

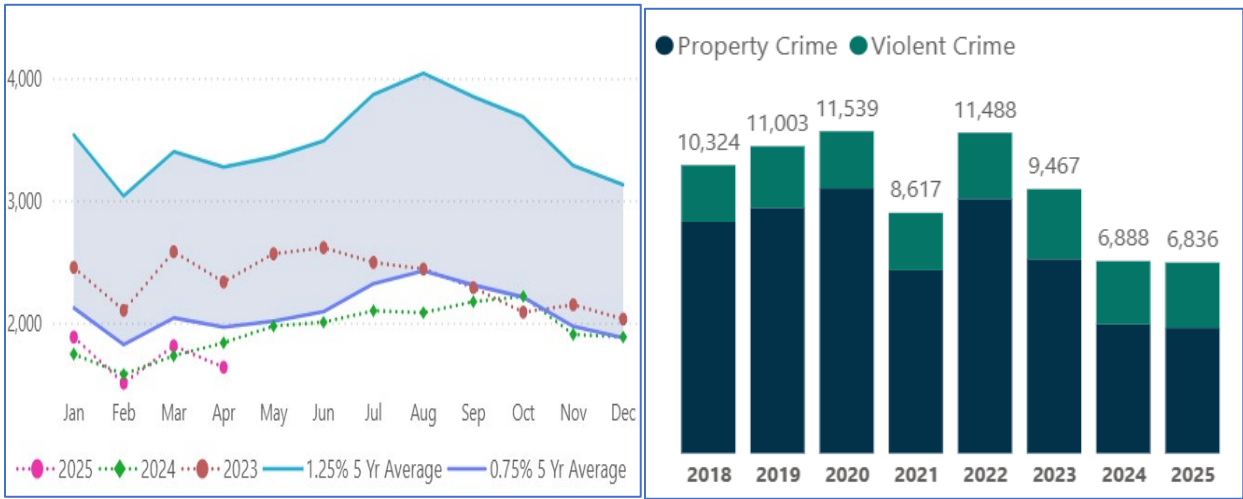


CORPORATE DATA & ANALYTICS

CALGARY POLICE COMMISSION – APRIL 2025

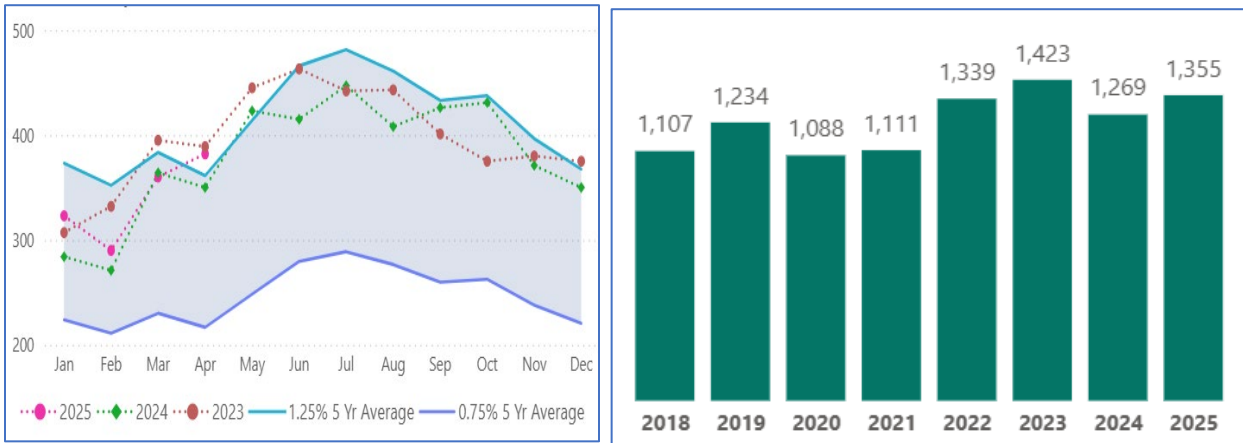
OVERVIEW

April's total crime is roughly on par with 2024, and 6.7% below the five-year average. The significant decreases in property crime continue to drive the overall numbers.



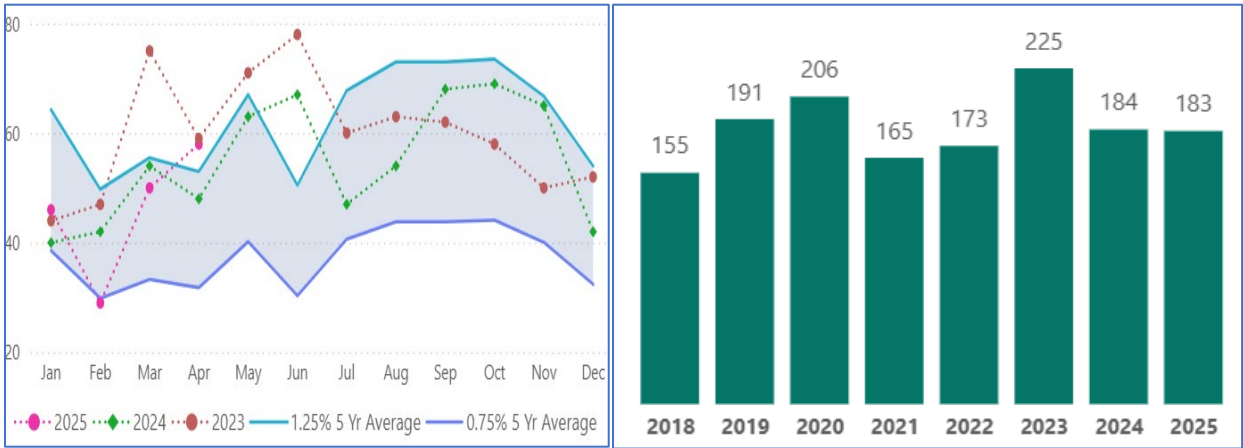
ASSAULTS

There was a 7% increase in assaults compared to this time last year and 9% increase compared to the five-year average. No significant changes to the typical scenarios where incidents are fueled by drugs and/or alcohol at bars and restaurants. There were multiple incidents in the vicinity of the LRT, Drop-In Centre, Alpha House, and Sheldon Chumir. All other incidents appear to be random.



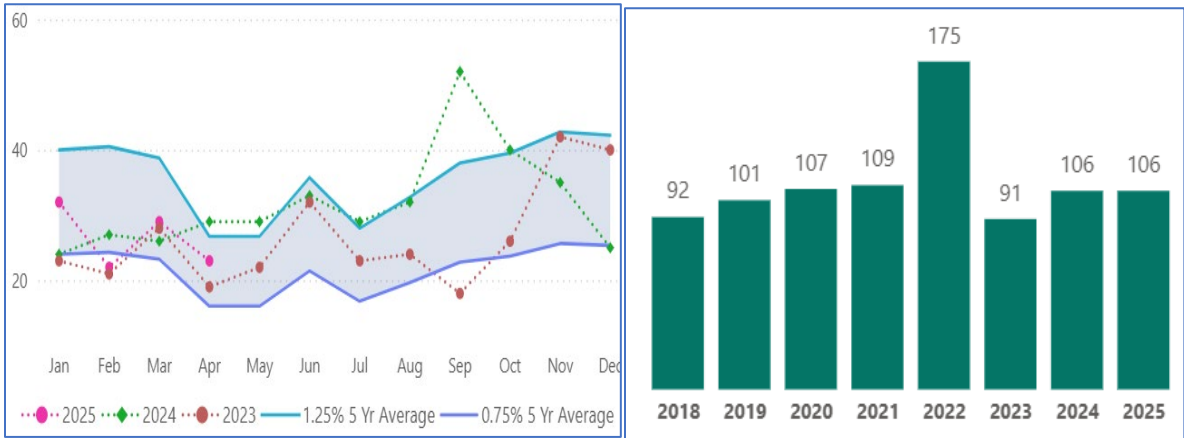
STREET ROBBERIES

Street robberies on are on par with 2024, and there was a 4.2% decrease from the five-year average. Typical trends where people are targeted for their property (i.e., phones, cash, backpacks) continue and some incidents involve a number of people “jumping” the victim.



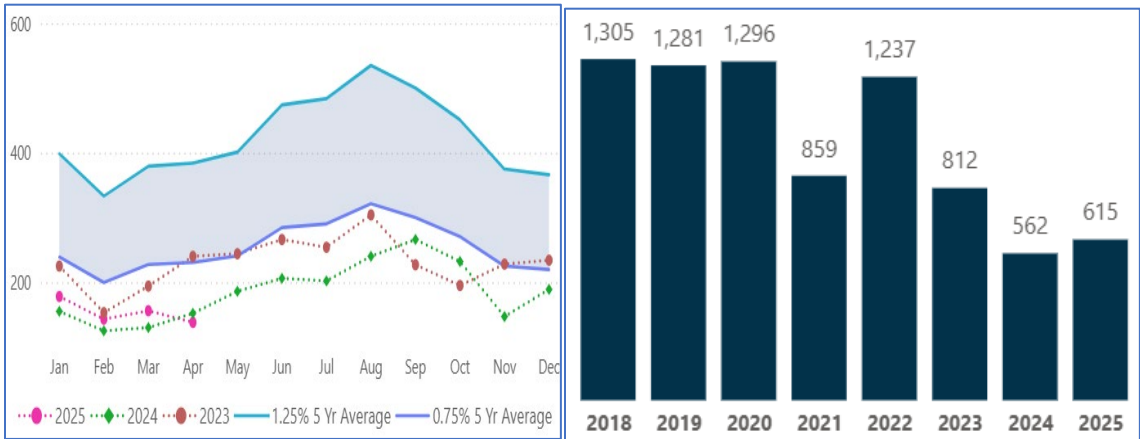
COMMERCIAL ROBBERIES

Commercial robberies are on par with the previous year, however they are 10% below the five-year average. The trend of incidents involving loss prevention officers being assaulted once they have apprehended a shoplifter continues. Cannabis stores, convenience stores, and liquor stores are commonly targeted. Knives and bear spray are often used to threaten victims.



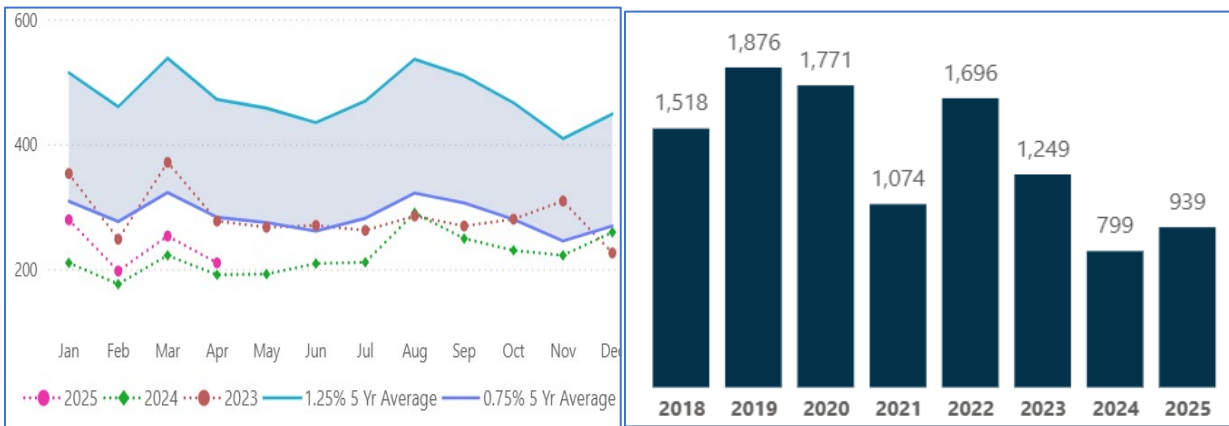
BREAK & ENTER (B&E) - DWELLING & OTHER

There was a 9% decrease in B&Es compared to 2024, and 35% decrease compared to the five-year average. The BEs are distributed across the city. Break and enters to garages/sheds are expected to increase into the summer months as people leave doors open while gardening, etc.



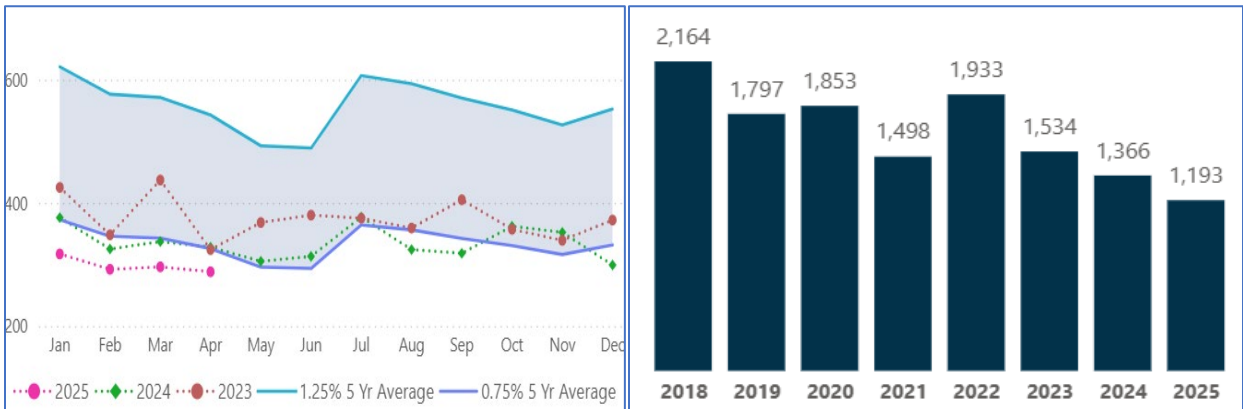
BREAK & ENTER (B&E) - COMMERCIAL

There was a 17% increase of commercial BEs compared to last year, and a 29% decrease compared to the five-year average.



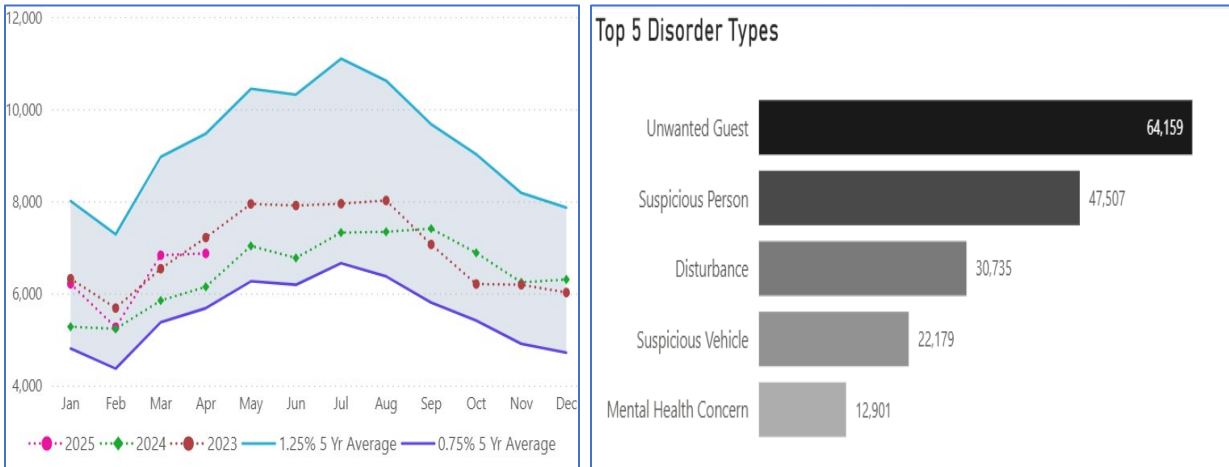
VEHICLE THEFT

Vehicle theft incidents continue to decline, 13% in comparison to last year and 27% compared to the five-year average.



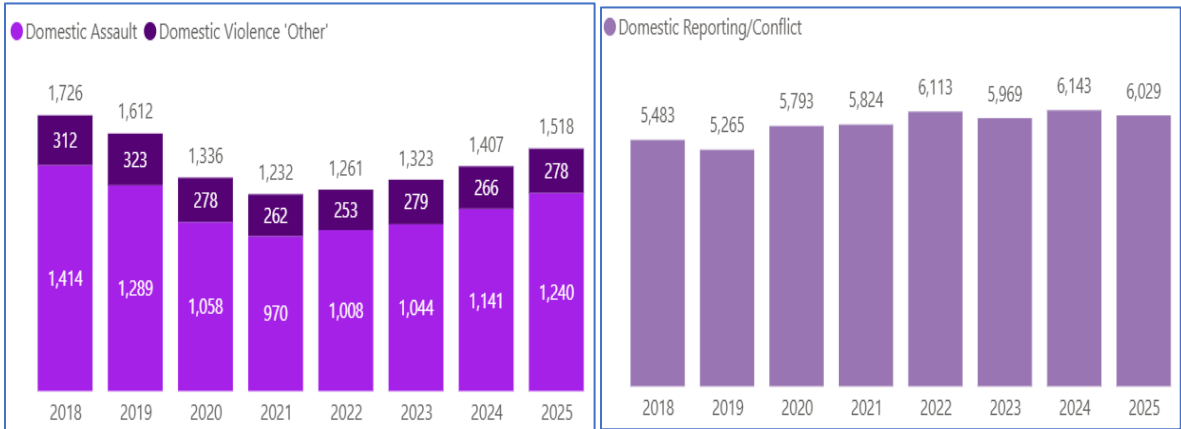
DISORDER

Disorder increased by 12% compared to last year, and 4% over the five-year average. There is no change in the top 5 call types driving disorder, which together include unwanted guests (36%) and suspicious persons (20%) that together account for over 50% of disorder calls.



DOMESTICS

Domestic assaults and other violence¹ have increased by 8% compared to 2024, and 16% compared to the five-year average. Non-criminal incidents continue to be roughly on par with last year and previous years. We are monitoring the assault severity as well as demographics to assess whether there has been a shift that may explain the increasing violent incidents. The rate of violence is something to consider as the increase in volume may be a factor of increased population as well as a reflection of the increasing stressors/uncertainties in current life.



¹ Domestic “other violence” includes kidnapping, sexual offences, threats, forcible confinement, criminal harassment and threatening/harassing communications.

BUREAU OF COMMUNITY POLICING | BRIEFING NOTE



Community Hub Counter Update | November 2024 to April 30, 2025

Issue Background

On October 15, 2024, the City of Calgary's lease for the Stephen Avenue Safety Hub (SASH) located at 230 8 Ave. S.W. expired. Due to unforeseen circumstances, the lease could not be renewed, thus launching a search to find an alternative location in the downtown core. At the request of community, Council and the recommendation of the Downtown Safety Leadership Table, a new location for downtown police reporting location was sought. As a result, a new location for both the CPS Community Counter and Downtown Safety Hub was launched at 115 6 Ave. S.W. District 1, closed the front counter at the Ramsay location, relocating its front counter services to the Downtown Community Counter.

Current State

The transition from the SASH to the Community Counter and Safety HUB has gone according to anticipated outcomes in the last six months. The dedicated physical presence that the SASH afforded Eighth Avenue has proven that the original location was a social disorder suppressant for the area. Since the move, despite dedicated operational efforts, social disorder and related crime continues to rise.

We also anticipated challenges with having the community counter see the same volume of work as it did when it was at Ramsay Station. We know, anecdotally, that some of that volume has gone to neighboring district offices and created public frustration with finding and accessibility of the new location. On the positive side, our officers and partner agency officers, have embraced this space and are utilizing it to the benefit of collaborative efforts, employee wellness and morale. In addition, we anticipate significant operational advantage of this new location, compared with SASH, as we experience summer protest season and our first Stampede Parade in the coming weeks.

The CPS continues to work with our partners at City Administration to increase signage & communication to generate greater public awareness and use of this community counter. We are less than a year into a five-year lease, and we remain optimistic that a shift in operational deployment via Operation Safer Calgary and other District 1 strategies will help address the social disorder and related crime that is occurring on Eighth Avenue and throughout the downtown core.

Results to Date | Community Counter – 115 6 Ave. S.W.

Ramsay Front Counter (six months prior to move, April – Sept 2024):

- Phone Calls Received: 4221
- E-Collision Reports Filed: 622
- Police Reports Submitted: 108
- Front Counter Interactions: 805

New Community Counter (November 2024-April 2025):

- Phone Calls Received: 1702

BUREAU OF COMMUNITY POLICING |

BRIEFING NOTE



- E-Collision Reports Filed: 270
- Police Reports Submitted: 62
- Front Counter Interactions: 322

In addition, two Criminal Code charges were laid and three, Priority 3 calls were addressed.

During the same timeframe, District 2 and District 6 Front Counter members noted an increase in workload with the closure of the District 1 Ramsay Front Counter.

Citizens have commented:

- They were not aware of the Ramsay closure or location of the new Community Counter
- Attending the next closest district is more convenient than attending a downtown location
- They can't attend during the Community Counter office hours of Monday-Friday, 0800-1600
- Citizens have stated that parking is an issue at the downtown location
- Community Counter signage was not overtly visible from the street or front of the building visibly indicating the presence of the Calgary Police Community Counter.

Mitigation Strategy

Marketing & Communications

In partnership with our City partners, a communications strategy is in the works with the goal to increase awareness, promote safety and engage community. This will be done through a multi-pronged, joint marketing approach, which is currently exploring the use of:

- Solutions to address and improve the signage for parking and way finding for the CPS Community Counter & Downtown Safety Hub
- Community mail drops will be done, in collaboration with Downtown Strategy
- Community newsletters will be utilized to spread awareness
- A social media campaign will promote awareness through storytelling and benefit-driven posts and reels

This campaign is expected to occur from June to August and is dependent on securing funding for marketing.

Parking

There are three public parking stalls out front (no change coming).

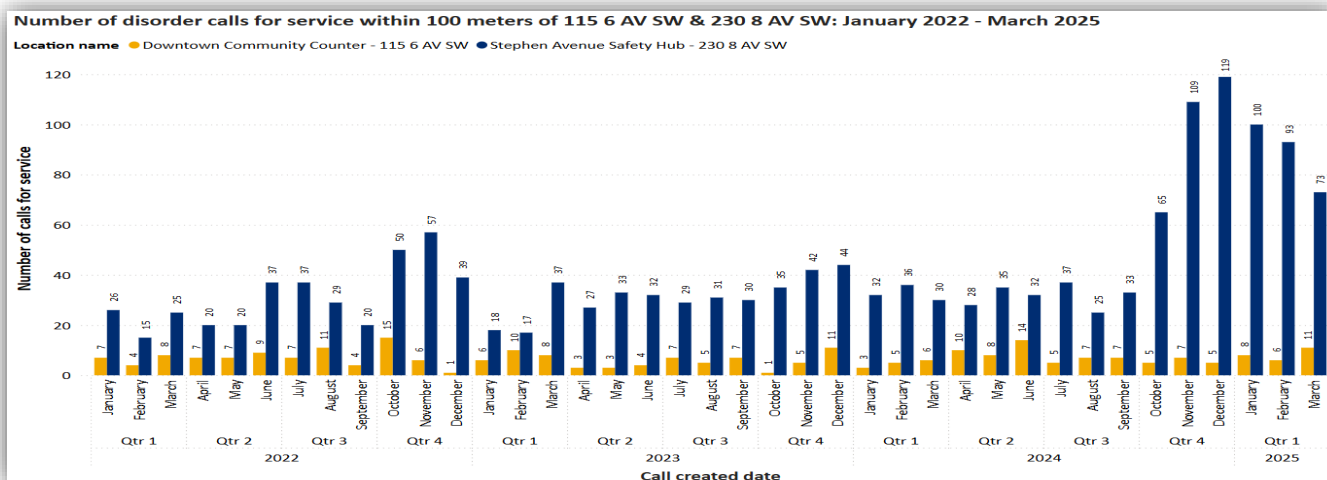
Disorder Calls for Service Comparison

SASH vs Community Counter

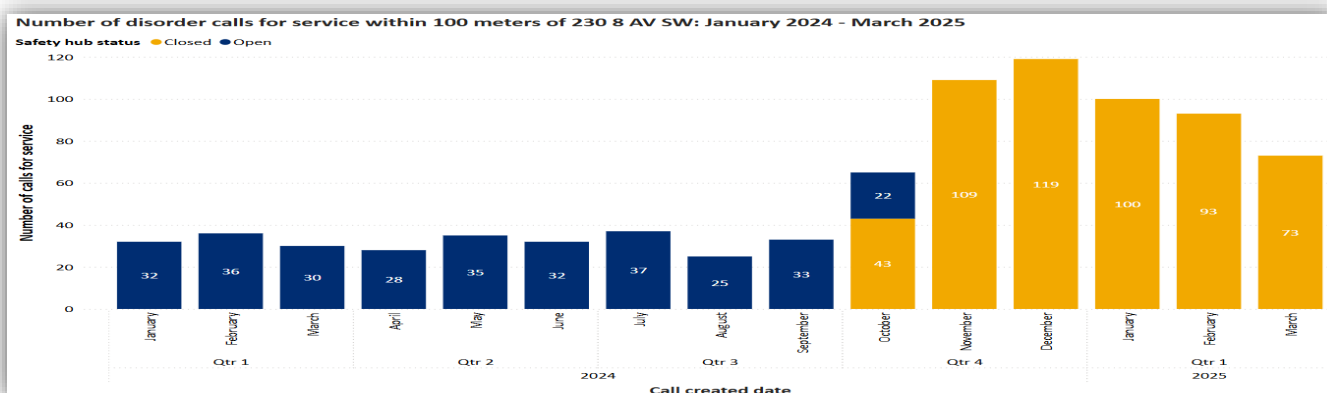
The chart below illustrates the monthly disorder calls for service within 100 meters of the former SASH at 230 8 Ave. S.W., and the current Downtown Community Counter at 115 6 Ave. S.W.

Since 2022, the monthly volume of disorder calls for service have remained consistent near 115 6 Ave. S.W. In contrast, the volume of disorder call for service near 230 8 Ave. S.W. significantly increased starting in October 2024, when the SASH closed. Disorder near 115 6 Ave. S.W. has been a small fraction of that near 230 8 Ave. S.W. throughout the date range shown.

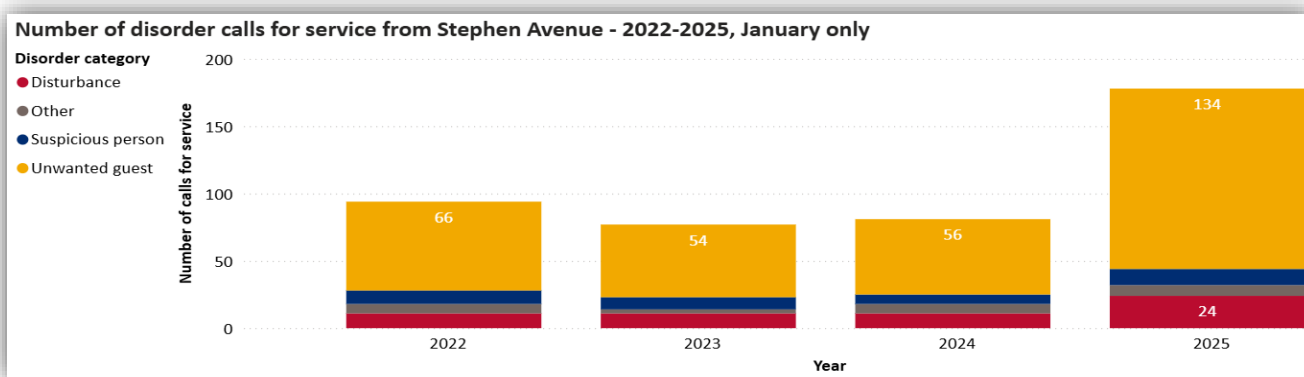
BUREAU OF COMMUNITY POLICING | BRIEFING NOTE



Since the closure of the former SASH location, the volume of disorder specifically on Stephen Avenue has increased exponentially in the area. This change has been clearly indicated by community concerns, District 1 member observations and statistics on calls for service.



It should be noted that unwanted guest calls were the most notable spike in the disorder category of calls for service on Stephen Avenue since the closure of the SASH.



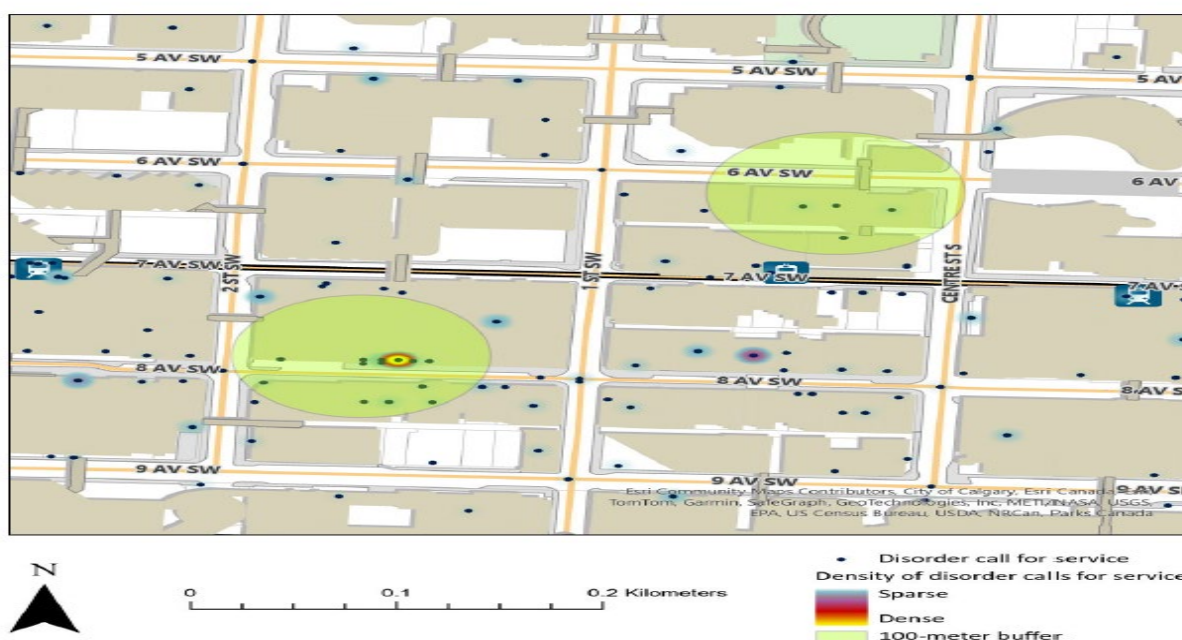
BUREAU OF COMMUNITY POLICING |

BRIEFING NOTE



There are two concentrated disorder hotspot locations on Stephen Avenue that continue to drive calls and undesirable behavior in the area (see map below). One hotspot is located between Centre Street S. and First Street S.W. in proximity to an off-price department store, while the second more dense concentration is between First Street S.W. and Second Street S.W. where the former SASH was located, and in proximity to budget store and fast-food restaurant locations. It should be noted that the McDonalds is open 24 Hours for business, with in restaurant seating and service available until 10 p.m. , while Dollarama is open from 7 a.m. to 8 p.m., Monday through Friday, and 9 a.m. to 6 p.m. on weekends).

**Disorder calls for service near the former SASH location and the current Downtown Community Counter location:
November 2024 - March 2025**



Next Steps

Over the next six months, we will work the actions outlined in the strategic communications plan, we will continue to adapt our operational deployments, community outreach efforts and business engagements to reshape public perceptions of safety, while improving customer service for downtown residents, business owners and visitors. With a full year of data analysis and dedicated efforts in these regards, we will bring back a one-year evaluation to consider additional revisions for the future.

Authored By

Thomas Cummins-Russell, Community Policing Analytical Unit
Tamara Daku, Manager Community Policing Analytical Unit

Distributed To

Deputy Chief Cliff O'Brien, Bureau of Community Policing
Superintendent Scott Boyd, South Division
Insp. Bobrowich, District 1 Commander



Traffic Safety Updates

Quick Traffic Stats:

Year to date (April 30th) there have been eight fatal collisions and eight fatalities, including three pedestrian fatalities and one collision involving alcohol or drugs (toxicology reports extremely delayed with 1yr+ wait times).

Alberta Traffic Safety Calendar Updates:

The March traffic safety focus is occupant restraints (seatbelts). Summonses were issued under 15 charging sections of the Traffic Safety Act-Vehicle Equipment Regulations Section.

Occupant Restraints Facts:

- From 2017 to 2021, there were 201 unbelted fatalities in Alberta.
- About a fifth of those fatalities were those aged 18 to 24 years old.
- During 2021, 35 people died and 250 people sustained injuries as a result of not being properly restrained at the time of the collision.
- In 2021, restraint users involved in collisions had a much lower injury rate (7.4 per cent) than those not using restraints (14.5 per cent).
- A 2017 Driver Attitude Survey indicated 95 per cent of Albertans agree that when driving or riding in a motor vehicle, one should always wear a seatbelt.
- Without a booster seat, a child is three and a half times more likely to suffer a significant injury.
- Airbags offer additional protection in collisions, but are designed to supplement the safety features provided by seatbelts. Always buckle up!

March
Seatbelts



March Occupant Restraint Charges

Charge Description	Year					
	2020	2021	2022	2023	2024	2025
CHILD IMPROPERLY SECURED					6	10
CHILD NOT SECURED IN PROPER CHILD SEAT			1	1		
CHILD PASS F/T WEAR SEATBELT					11	15
CHILD RESTRAINT SYSTEM NOT PROPERLY INSTALLED	2	1	1	1	3	6
CHILD WEIGHING LESS THAN 18KG NOT PROPERLY SECURED IN RESTRAINT SYSTEM	3	1	3	5		
DRIVER F/T WEAR SEATBELT	39	45	33	53	61	54
DRIVER/PASS F/T/W ADJ/SECURE SEATBLT					13	7
DROVE M/V IF SEATBELT WHOLLY INOPERATIVE	1			1		
IMPROPER USE OF SEATBELT	1	4	1	6	2	
OPER MV W/SEATBELT REMOVED						
OPERATE MV WITH CHILD 6-16 NOT WEARING SEATBELT	5	2	3	3		
PASSEN IN SEAT W/NO BELT					8	17
PASSENGER NO SEATBELT	17	14	7	13	15	1
REMOVE SEATBELT/RENDER PARTLY/WHOLLY INOPERATIVE/MODIFY						
REMOVE/MODIFY SEATBELT						
Grand Total	68	67	49	83	119	110



The April traffic safety focus is speeding. Summonses were issued under 14 charging sections of the Traffic Safety Act .

Speed Facts:

- In 2021, 68 people were killed and 1,251 were injured in collisions involving at least one driver travelling at an unsafe speed (ie. a speed too great for the given conditions).
- More than one in four fatal collisions involved one or more speeding drivers.
- Based on rates per 10,000 licensed operators, drivers aged 20-24 were more likely to have been speeding at the time of a collision than drivers in older age groups.
- Speeding may cause a driver to lose control of their vehicle. Drivers involved in casualty collisions who travelled at an unsafe speed were three times as likely to run off the road as drivers who were not speeding.
- Speeding increases the distance needed to safely stop a vehicle. For example, on a dry road, it takes an average vehicle travelling 40 km/h about 26 metres to stop and at 80 km/h, it would take about 69 metres.

April Speed



April Speeding Charges	Year					
	2020	2021	2022	2023	2024	2025
CARELESS DRIVING	49	47	59	58	42	52
DRIVE VEHICLE IN EXCESS OF SPEED LIMIT	896	2793	1751	2010	284	31
DRIVE WHILE STUNTING ON HWY					6	11
EXCEED MAX SPEED CONSTRUCT/PERSON					53	76
EXCEED MAX SPEED CONSTRUCTION	27	93	62	26	77	197
EXCEED MAX SPEED LIMIT					1560	1304
EXCEED MAX SPEED LIMIT REFERENCE CALGARY BYLAW 1H2020						
EXCEED SPEED DURING EST MAX IN EFFECT	16	59	48	86	86	54
EXCEED SPEED IN A CONSTRUCTION ZONE WHEN PERSONS PRESENT	9	6	9			
RACING ON HGHWY W/O PERMIT					2	2
RACING ON HIGHWAY	4	5	3	5	2	
STUNT ON HIGHWAY	19	7	23	24	3	3
STUNT ON HWY W/OTHER USERS					11	9
TRAVELLING/PASSING EMERG.VEHICLE					7	1
Grand Total	1020	3010	1955	2209	2133	1740