



ISC: Unclassified

# CPS Race Data Analysis 2024

Katherine Murphy, Chief Strategy Officer  
Rebecca Davidson, Manager  
Bureau of Organizational Performance  
2025 – May 28<sup>th</sup>



# Building upon the race reports released in 2024 – six-year trending



## 2024: CPS Race Data Analysis

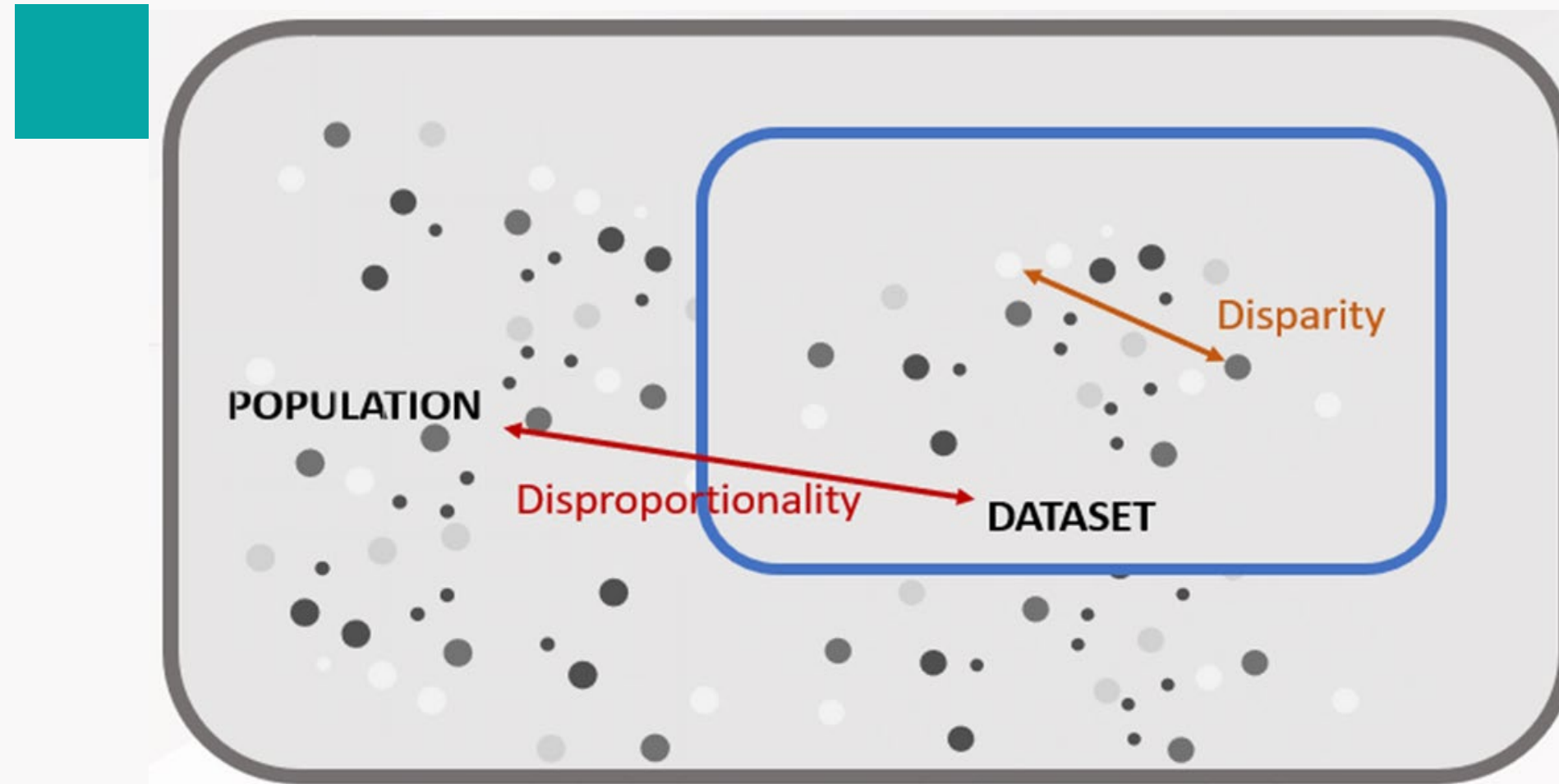
Scope: Missing persons, officer contacts, victims of violent crime & arrested individuals



## 2024: CPS Race Data Analysis of Use of Force Subjects

Scope: Demographics of use of force subjects, types of methods & arrests – findings presented in the De-Escalation & Use of Force Segment

# Foundational Concepts



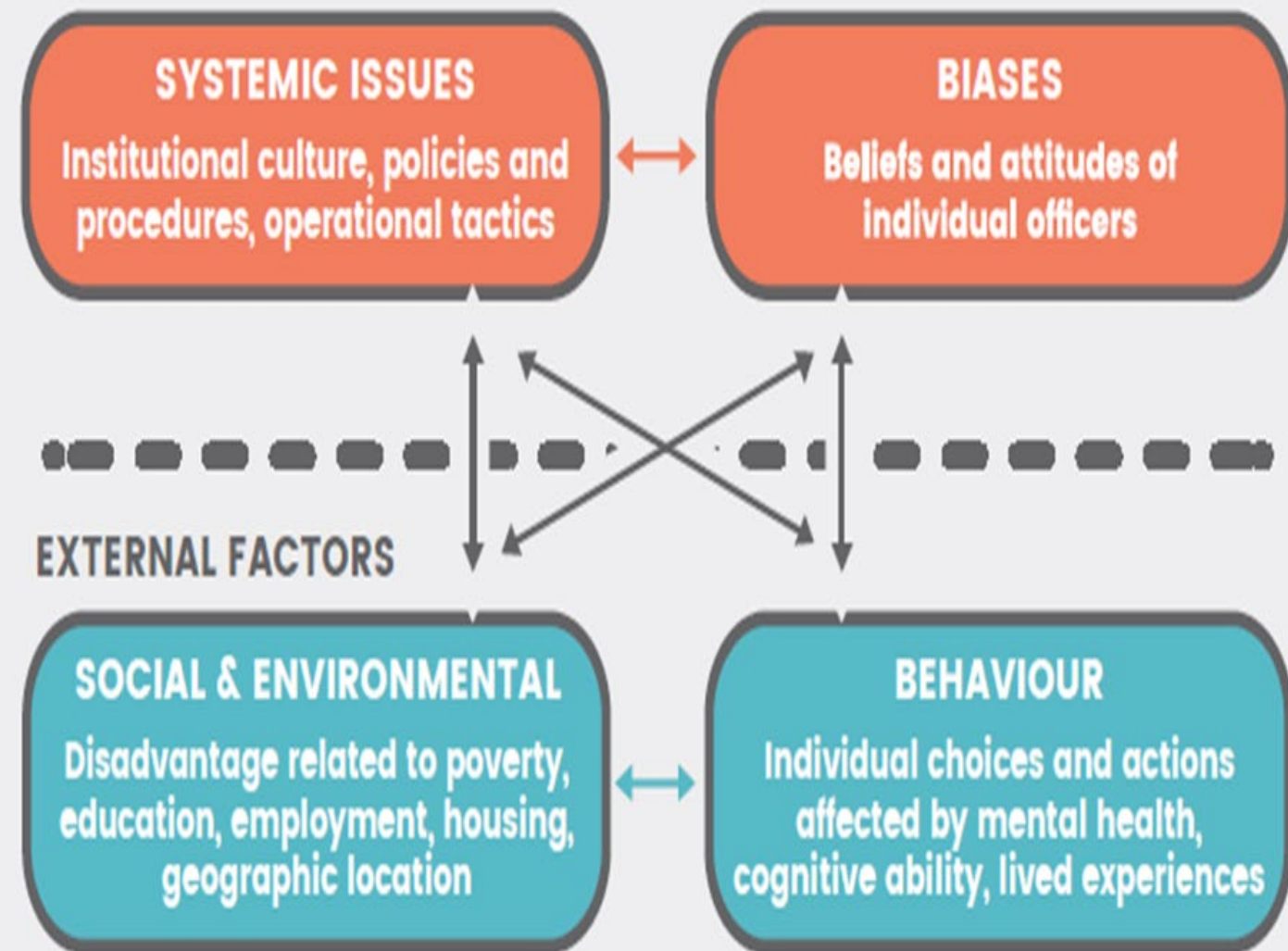
**Disproportionality** is the state of being either under or over - represented.

**Disparity** is the state of being unequal.

# Analyzing Race Data is complex

- **Key Challenge:** Obtaining consistent and reliable data (race-based and other intersected variables) to support rigorous analyses. Police data often lack granularity regarding socioeconomic contexts, limiting causal inferences.
- **Key Limitation:** Some advanced statistical techniques require detailed individual-level data, which is usually unavailable due to privacy laws, the lack of data sharing agreements, and other reasons. This limits analytical robustness and causal interpretations.
- **Key Opportunity:** Increasing adoption of detailed race-based data collection can enhance analytical precision and help differentiate between socioeconomic determinants and police enforcement practices.

## INTERNAL FACTORS



# CPS Race Data - Methodology and Limitations

- Engagement with, and feedback from community groups, non - governmental organizations, academic, and other police agencies
- Terminology adjusted to reflect feedback and methodology
- Data mining
- Statistical tests of trending

## Limitations

- Officer perception only
- Officers are limited to one race option, not allowing for mixed race
- 2021 Census data, does not reflect population growth and diversity
- Not all subjects are from Calgary



*Police are often placed in a reactive role, dealing with the symptoms of systemic failures rather than their root causes.*

# Overview of Report Findings

## Missing Persons

- Calgary youths account for **7.2%** of the population but **50%** of all reports.
- Indigenous youth are almost **14** times **over-represented**
- Over **99%** of all missing persons are located, irrespective of race.

## Indigenous Community Navigator

- This position works with the missing person and the family and professionals to increase resilience in crisis and to build supportive networks surrounding the person where appropriate.
- Led to a reduction in the frequency of missing person reports.
- Enhanced the ability to connect with Children and Family Services and Indigenous First Nations has resulted in a significant, positive impact on missing youth and their networks.

# Overview of Report Findings

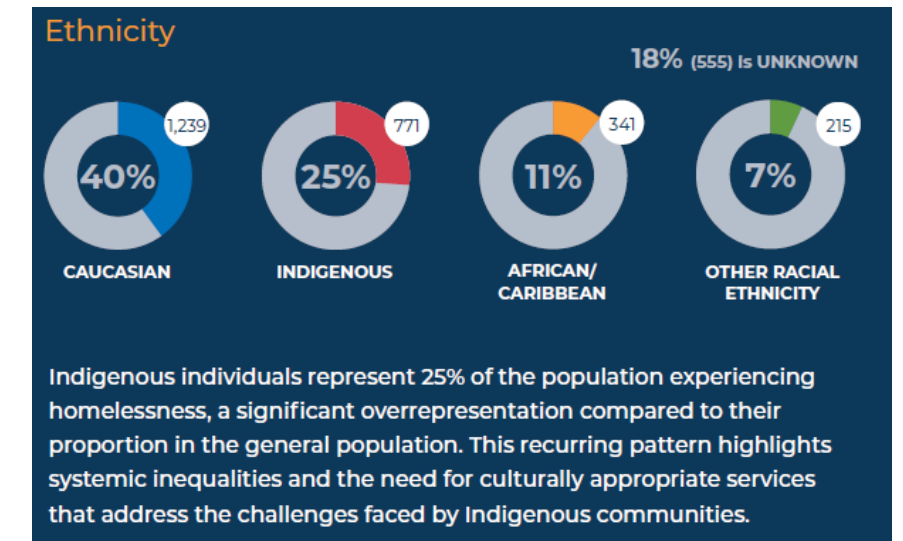
## Officer Contacts

- Indigenous persons are **over - represented** as subjects of officer contacts resulting from both public and officer calls for service.
- Compared to white females, Indigenous female subjects are **5 times** more likely to be subject of officer contacts resulting from officer generated calls.

## Unhoused & Sheltered Persons

- ~**33%** of all officer - initiated interactions were linked to calls generated by the CERT initiative
- CERT is a proactive policing team focused on high crime areas and transit corridors, with the flexibility to move positions based on current crime data.
- The goal is to create safe public spaces by engaging with the community and taking action to reduce crime and social disorder through focused, collaborative enforcement and compassionate supports .

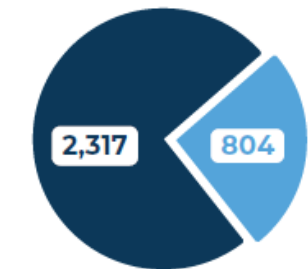
ISC: Unclassified



### OVERALL

Sheltered  
**74%**

Unsheltered  
**26%**



Data revealed a **rise in the number of individuals utilizing shelters**, while the number of people living unsheltered or residing in encampments remained consistent with 2022 count data.

### INDIGENOUS

Sheltered  
**27%**

Unsheltered  
**42%**

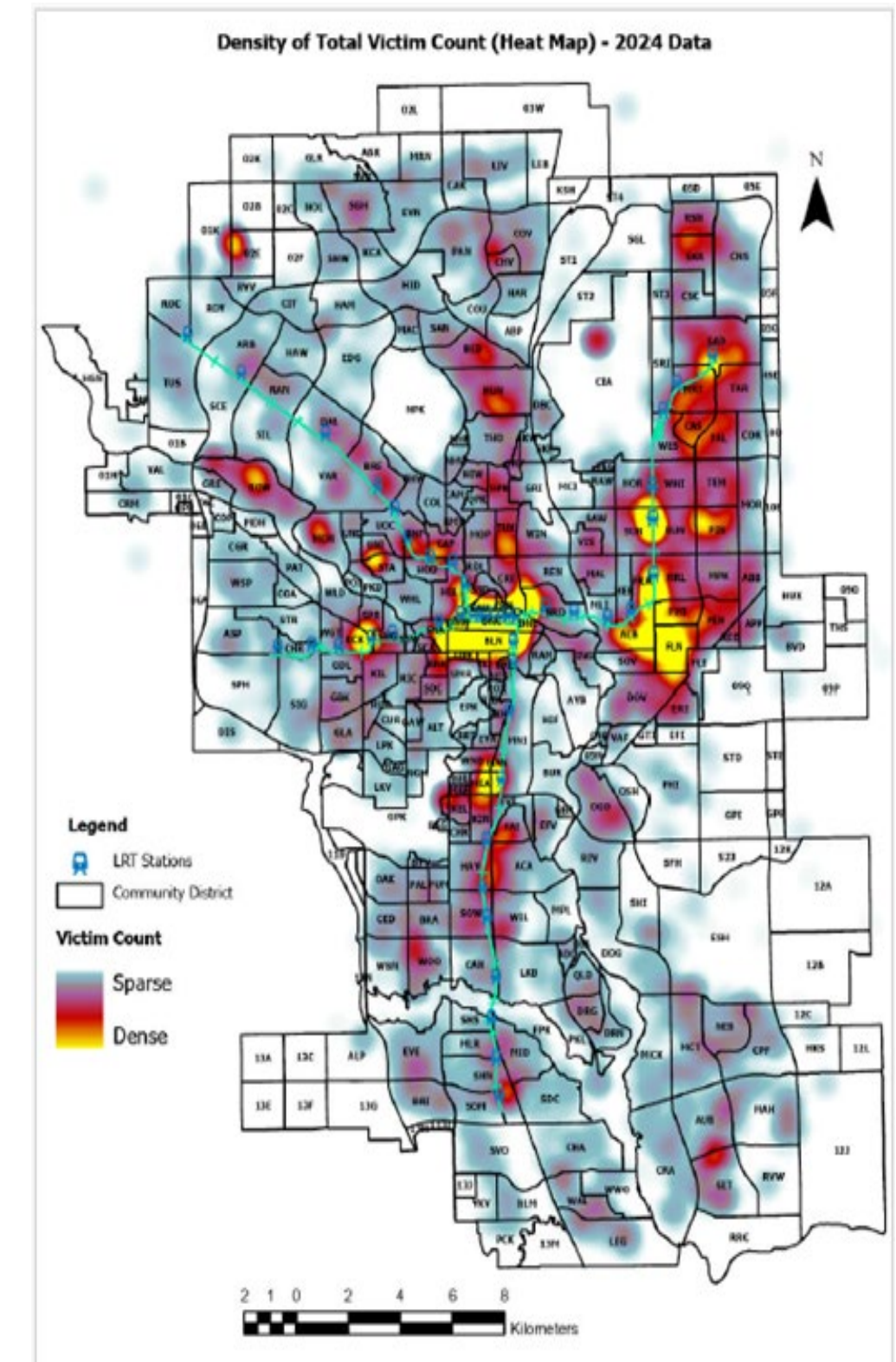
# Overview of Report Findings

## Victims of Violent Crime

- Indigenous persons are **2.1 times over - represented** in domestic-related sex offences and **2.7 times** in non-domestic-related sex offences.
- Indigenous females are **over - represented 3.8 times** in domestic assault, **3 times** in non-domestic assault, and **2.3 times** robberies

## Victimization Hotspots

- Victimization hotspots correlate with the:
  - LRT transit system
  - Downtown
  - Social support organizations.



# Overview of Report Findings

## Arrested Individuals

- ~37% of the individuals have been arrested more than once.
- Indigenous persons are **4 times over** - represented in **violent crime** arrests & **5 times over** - represented in **property crime** arrests
- Black persons are **1.6 times over** - represented in **violent crime** arrests

## RICES

### Field Release/Arrest Processing

- **R**epetition: prevent repeat behaviour,
- **I**ntity: establish the persons true identity,
- **C**ourt: ensure attendance at court,
- **E**vidence: secure evidence for the investigation,
- **S**afety: ensure the safety and security of any victim or witness.

# CPS Response and Next Steps

# Data will help to drive change

01



01

**Fostering  
relationships &  
building trust**

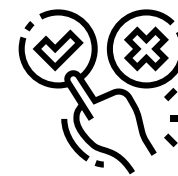
02



02

**Creating  
awareness &  
understanding**

03



03

**Informing strategic  
direction &  
decision making**

04



04

**Establishing  
transparency &  
accountability**

# Next Steps

This is a part of a much larger journey

- Increasing education, awareness, and understanding of race - data Service wide
- Establish a race - data strategy and ensure full integration with other relevant CPS strategies
- Continued dialogue and ongoing engagement with the community and partners
- Advance targeted initiatives
- Continually improve the technical analysis





ISC: Unclassified

# Questions

