



ISC: Unclassified

# Calgary Police Service Domestic Conflict Unit

Presenter: A/Supt. Nadine Wagner  
Criminal Investigations Division

Domestic Conflict Unit

2021 02 23





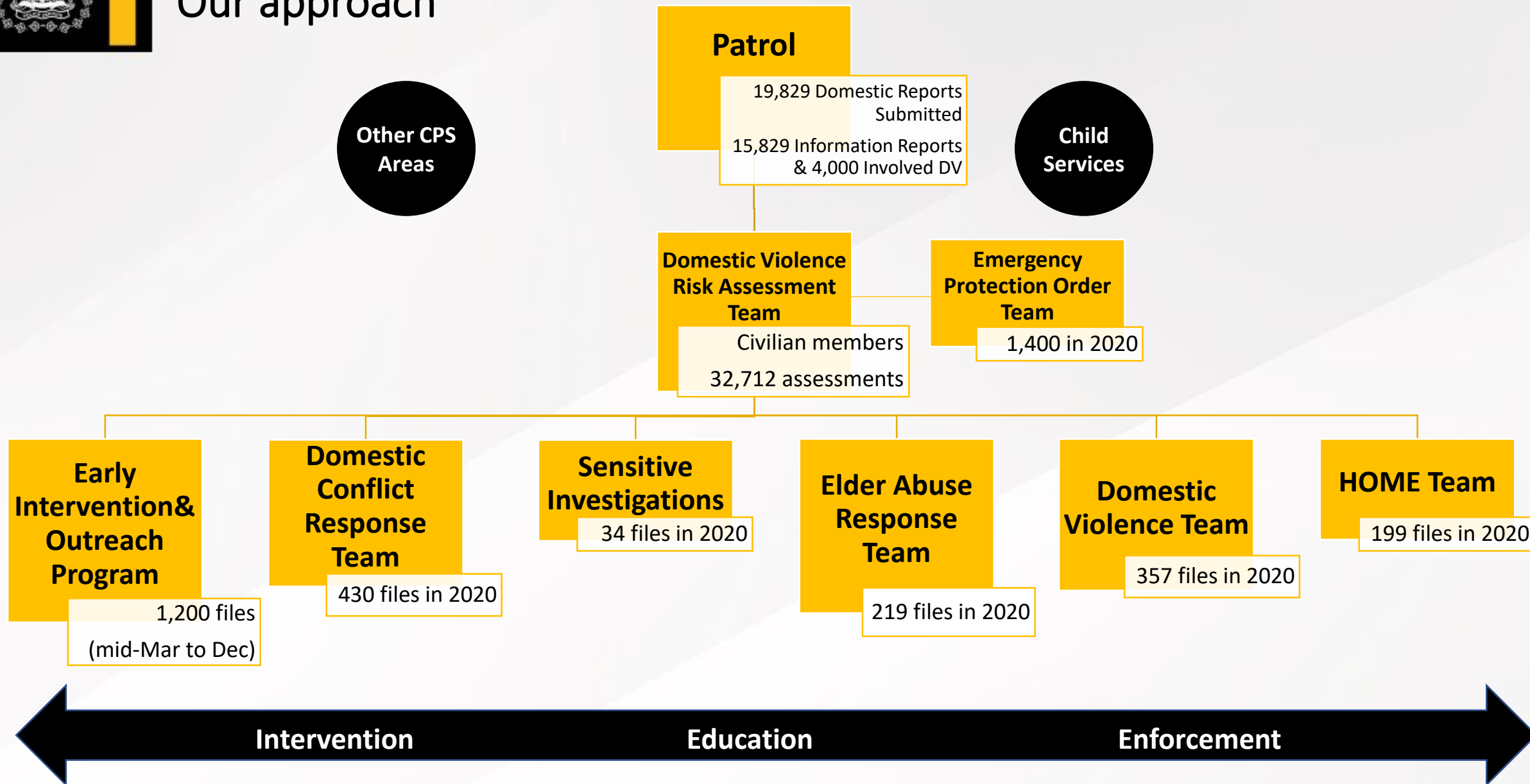
## How CPS Supports Families & Mitigates Risk

- Victim-centric and trauma informed approach with families
- CPS Domestic Conflict and Violence Policy Update
  - CPS robust definition of domestic relationship
  - Oversight at every call for service
  - Thorough reporting and documentation of all contact
- Risk management principles are applied to every contact CPS makes
- Work with partners to support families through education, diversion and prevention
- When enforcement is required, ensure wrap around resources are engaged through our partners to support victims and offenders



# Our approach

ISC: Unclassified





# Domestic Conflict Response Team Community Partners





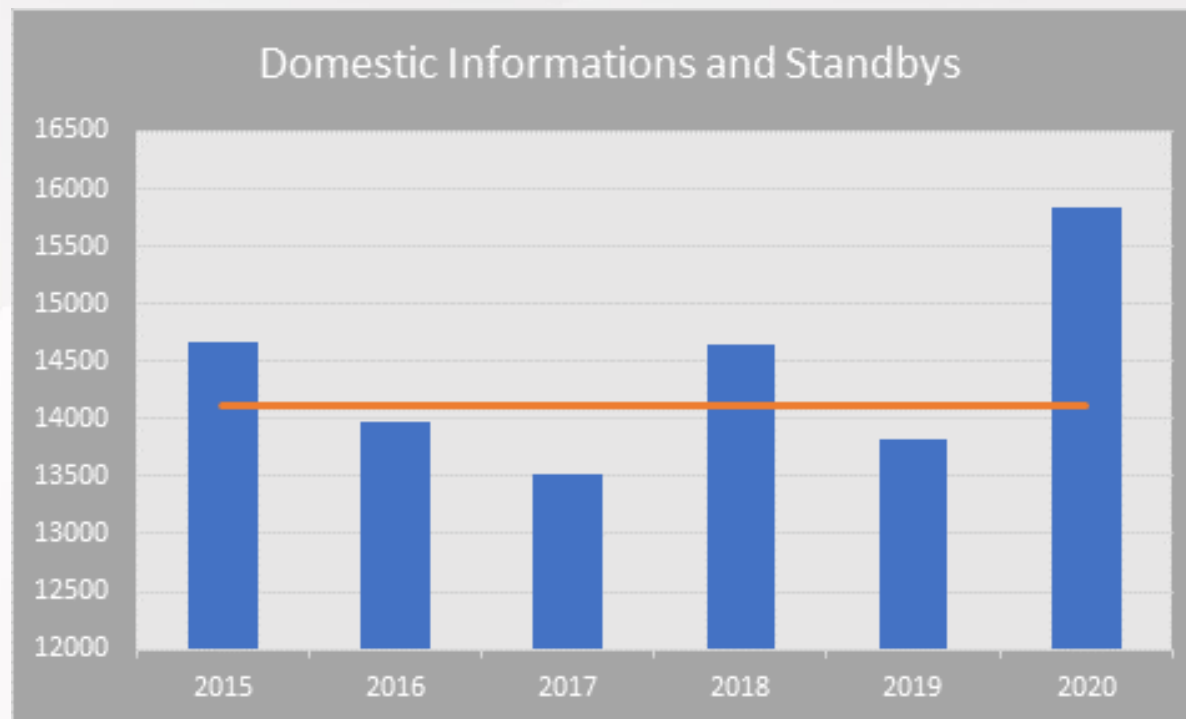
## Figures and trends

ISC: Unclassified

### Domestic Information reports and Standby reports

- Five-year average (from 2015-2019) is 14,125
- 2020 showed a 12% increase over the five-year average

<b>2015</b>	14,665
<b>2016</b>	13,984
<b>2017</b>	13,520
<b>2018</b>	14,636
<b>2019</b>	13,818
<b>2020</b>	15,829





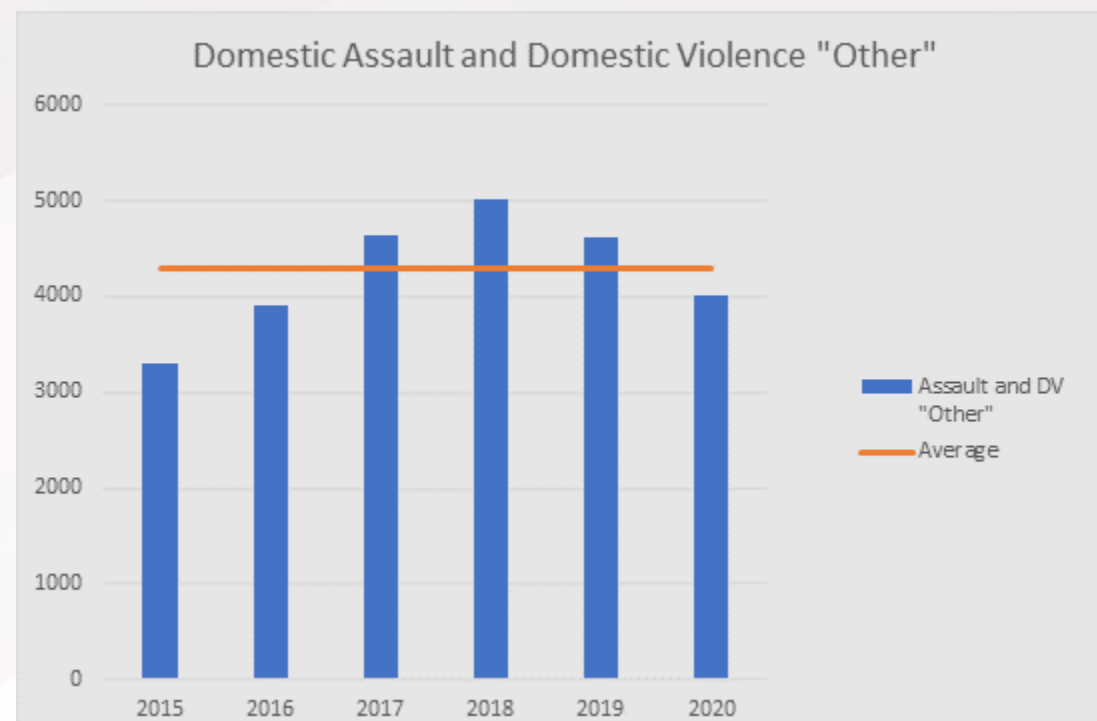
## Figures and trends

ISC: Unclassified

### Domestic Assault and Domestic Violence 'Other'

- Five-year average (from 2015-2019) is 4,291
- 2020 showed a slight decrease of 7% from the five-year average of Domestic Assault/Domestic Violence 'Other' but the five-year average was driven up by high numbers in 2018

<b>2015</b>	<b>3,289</b>
<b>2016</b>	<b>3,907</b>
<b>2017</b>	<b>4,629</b>
<b>2018</b>	<b>5,010</b>
<b>2019</b>	<b>4,619</b>
<b>2020</b>	<b>4,000</b>





ISC: Unclassified

# Questions?