




Gang Strategy

Presentation by Supt. Joe Brar



Current State

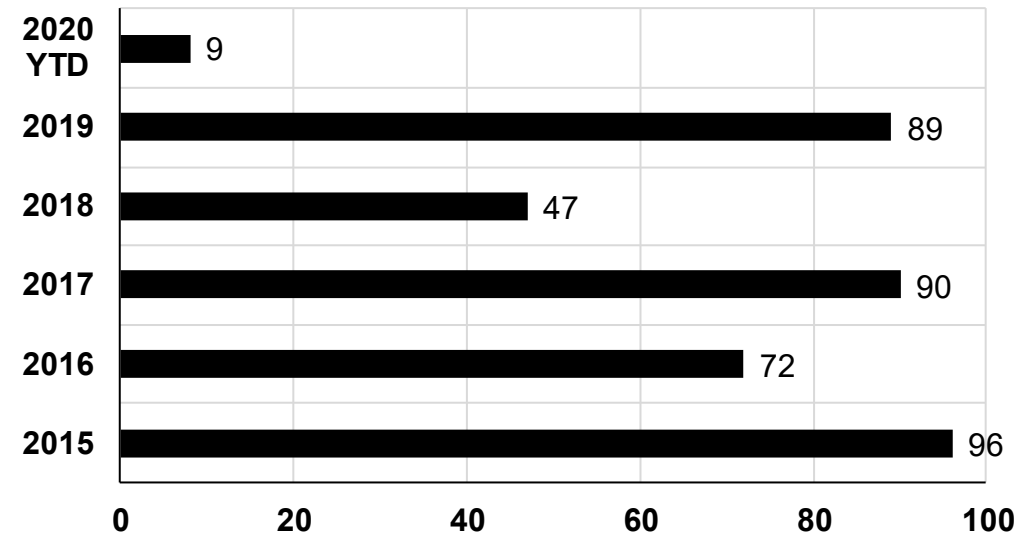
Violent crime includes: sex offences, robberies, assaults, domestic violence, shootings



Year	Violent Crime Incidents
2016	10,153
2017	11,996
2018	13,687
2019	14,023

Shootings:

5 year avg: 71

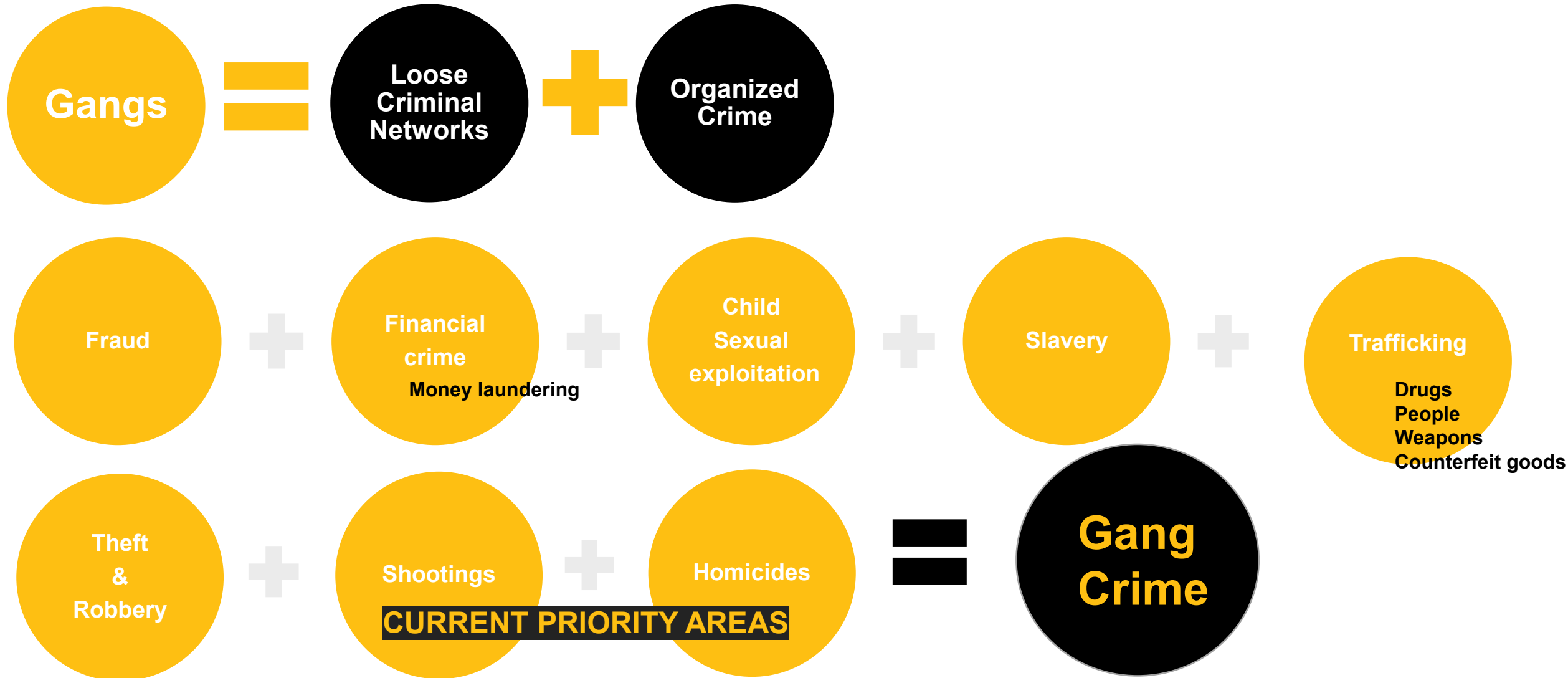


Categories: accidental discharge, domestic, problem location, drug trade, organized crime, undetermined

Themes: drugs, mental health, economy



Providing Context





The Strategy

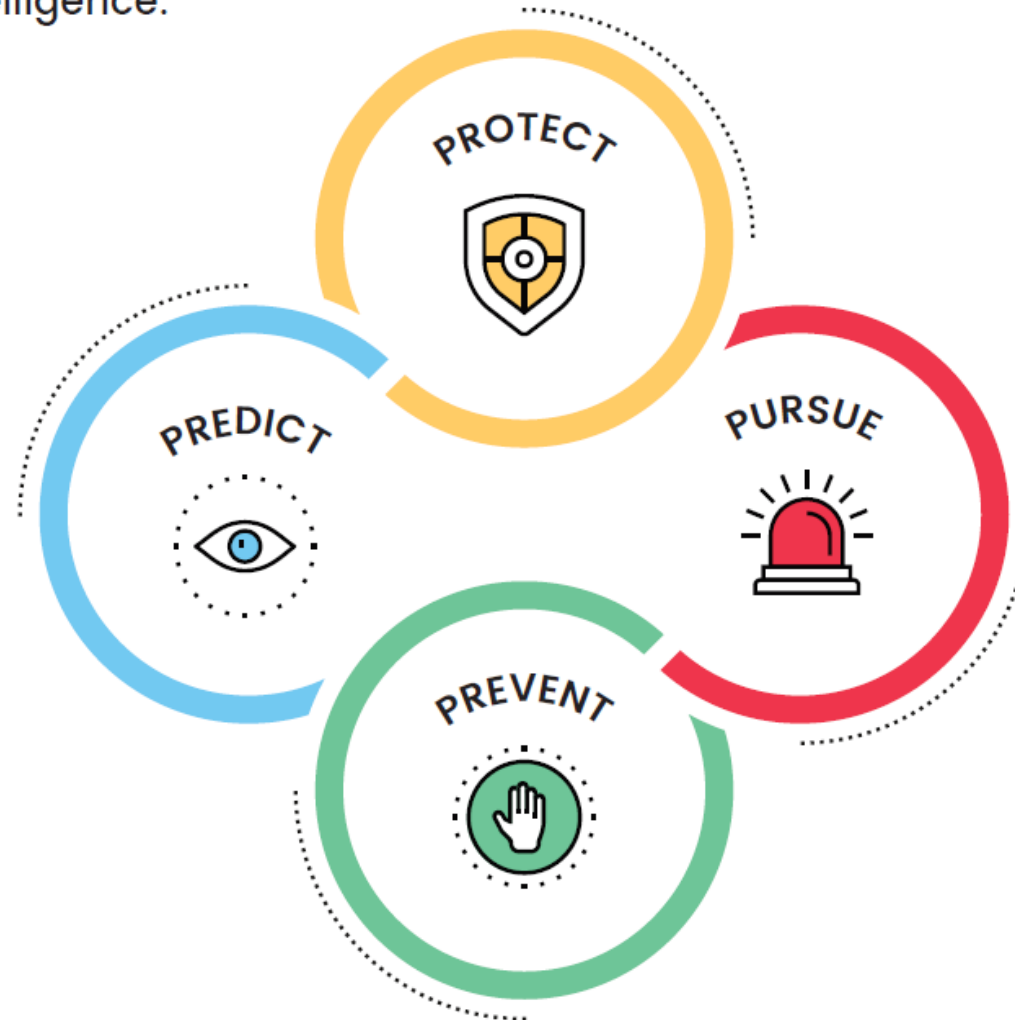
Guided by information and intelligence:

PREDICT

Consolidate intelligence and research resources to support enhanced operational performance.

PREVENT

Implement initiatives to prevent and intervene with gang involved youth and adults.



PROTECT

Reduce institutional and individual vulnerability to gang crimes.

PURSUE

Target and disrupt gang networks and activity.



The People

- Factors that impact a young person's entry into criminal activities:
 - **Trauma**
 - **Addictions**
 - **Their own addictions or those of close friends and or family members.**
 - **No role models or presence of wrong role models**
 - **Lack of direction/motivation**

Entering criminal lifestyle does not happen suddenly



Partnerships & Programs

Multi-agency School Support Team MAAST

Youth at Risk Development Program YARD

ReDirect

Integrated School Support Program ISSP

Start Smart Stay Safe S4

PowerPlay

Gateway

YouthLink

**Centre
for**

Newcomers



Presence

Every interaction is an opportunity to inform + engage + be aware.



School Resource Officers

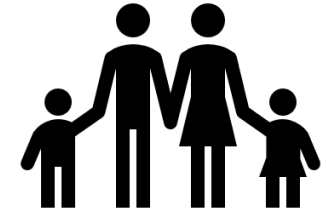
Presentations



Patrol Officers

Directed patrols

Community Resource Officers



Community events



Preventing at all ages

Serious Habitual Offender Program (SHOP)

serious offenders under 25.

Prolific Offender Engagement Team (POET)

offenders who have been identified as high-volume offenders.

Priority Prolific Offender Program (PPOP)

high volume offenders that engage in crime across southern Alberta.

High Risk Offender Program (HROP)

serious violent and sexual offenders that pose a high risk to our community.

Habitual Offender Management and Enforcement (HOME)

high risk offenders who engage in repeated offences of domestic violence.

Offender Management Strategy aims to reduce the risk of recidivism + connect offenders to programs and services.



The community

INTELLIGENCE

Making CPS aware of information related to suspicious activity.

AWARENESS

Being aware of the signs of suspicious activity in your homes, schools and communities, and knowing where to go for help.



Addressing the gaps

- Resources for **adult** offenders including diversion & exit programs.
- Sustained support from **Crown prosecutors** to handle workload.
- **Mental health & addictions** support for parents & families of children.
- Substance use/addiction support for **offender management** clients.
- Programming and supports for **transition** from youth to adulthood.
- **Capacity building** in the community to share & receive information.
- **Correctional programs** available for an offender post custody.



Questions